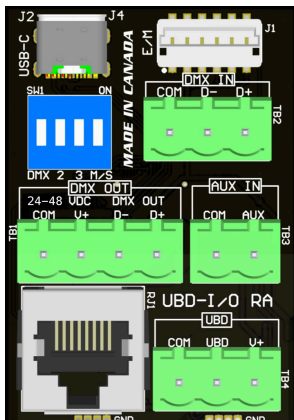


PRESIDOR™

PWS - 20P - RETRO INSTALLATION REFERENCE



UP = ON
DOWN = OFF

SW1 SELECTION

SW1	DESCRIPTION	FUNCTION
1	DMX TERMINATION ON	MAIN STATION ONLY
2	NOT USED	NOT USED
3	PASSWORD RESET	ON TO ENABLE
4	MAIN/SECONDARY PWS SELECT	ON FOR MAIN ONLY

TB1 (DUPLICATED CONNECTIONS IN RJ1)

$\left. \begin{matrix} COM \\ V+ \end{matrix} \right\} 24 - 48V_{DC}$

D^- = DMX DATA OUTPUT (-)

D^+ = DMX DATA OUTPUT (+)

TB2 (DMX INPUT FROM EXTERNAL SOURCE-SNAPSHOT)

COM = DMX COMMON

D^- = DMX DATA INPUT (-)

D^+ = DMX DATA INPUT (+)

TB3 (AUXILIARY CONTACT INPUT)

COM = CONTACT COMMON

AUX = CONTACT INPUT

TB4 (UNIPOLAR BI-DIRECTIONAL DATA)

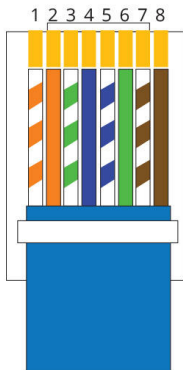
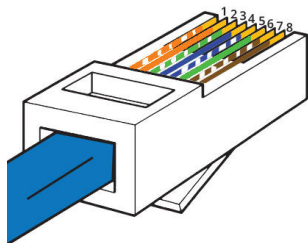
$\left. \begin{matrix} COM \\ V+ \end{matrix} \right\} 24 - 48V_{DC}$

UBD = UBD DATA

RJ1 (CONVENIENT CONNECTION BETWEEN THE MAIN PWS AND PRLC-4 ROOM LINKER/COMBINER) FOR MODEL#PWS-20P-RETRO ONLY!

DUPLICATION OF TB1 CONNECTOR ON RJ45 AS PER CAT5 WIRING STANDARD 568B

RJ45 Pinout T-568B



- | | |
|-----------------|----------------|
| 1. White Orange | 5. White Blue |
| 2. Orange | 6. Green |
| 3. White Green | 7. White Brown |
| 4. Blue | 8. Brown |

- | | |
|---------|---------|
| 1. DMX+ | 5. VIN+ |
| 2. DMX- | 6. NC |
| 3. NC | 7. GND |
| 4. VIN+ | 8. GND |

NOTE: IN A MULTIROOM SYSTEM, ONLY THE MAIN STATION SHOULD CONNECT BACK TO THE ROOM LINKER COMBINER (RLC). SECONDARY STATIONS SHOULD BE DAISY-CHAINED TOGETHER VIA CONNECTOR TB4 AND CONNECTED FROM THE MAIN ONLY!

JOHNSONSYSTEMS.COM